



ZEPELIN
JACKET COLLECTION

THE UNIQUE FITTED DESIGN COMBINED WITH HIGH QUALITY MATERIALS MAKES THIS JACKET JUST PERFECT!

LIGHTNESS & FUNCTIONALITY ARE KEY ELEMENTS IN THE TEE JAYS JACKET COLLECTION. DESIGNED WITH FOCUS ON DETAILS, COMFORT AND QUALITY.

TEE JAYS
REG. TRADEMARK SINCE 1976

ZEPELIN JACKET

Lightweight padded jacket for all year use. Wind resistant and water repellent face 300T fabric. Styled and shaped for best fitting and cool appearance.



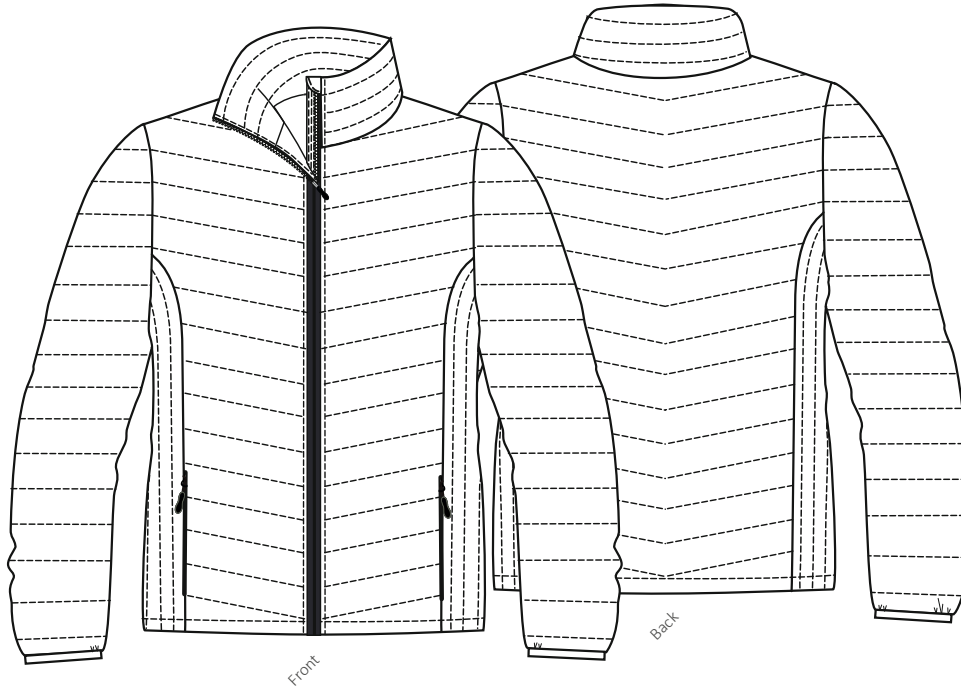
Inner pocket // Quality zippers // Inside zipper for decoration // Shaped fit

 100% polyester 300T with 100% polyester padding and lining  S-3XL  10/1 pcs



PRODUCT SHEET

STYLE 9631



Style details:

Style: 9631 Ladies Zeppelin Jacket
 Quality: 100% polyester 300T with polyester padding and lining.
 Technical data: Wind resistant and water repellent
 Size: S-3XL

Features:

- Inner pocket
- Quality zippers
- Inside zipper for decoration
- Shaped fit
- 2 side pockets

Sizechart:

1/2 chest at armhole
 Total length from CB to end of sleeve
 Front length from top pointer shoulder to bottom
 Back length from top pointer shoulder to bottom

S	M	L	XL	XXL	3XL
46	49	52	55	58	61
82	84	86	87	88	89
65	67	69	70	71	72
65	67	69	70	71	72

All measurements are in cm before washing